

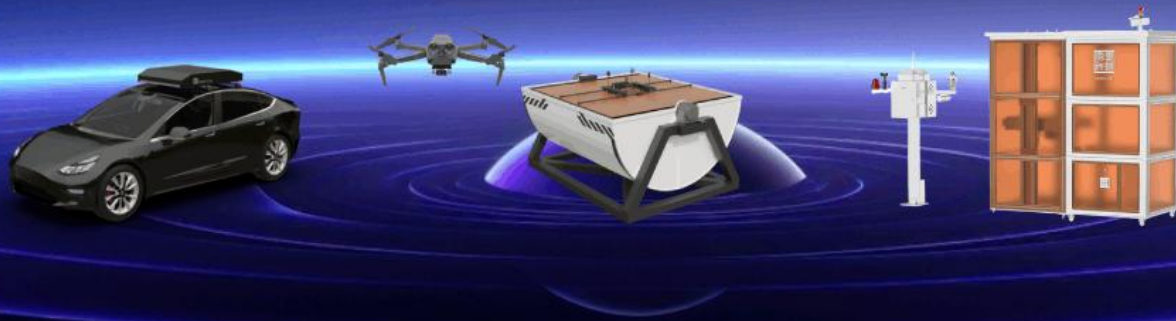
HEISHA Catalog

For Integrator





We build Bot-mansions



**Save development time and
costs for developers**

C a t a l o g

01

Structure and transmission

02

Charging and landing gear

03

Dock controls and sensors

04

Flight control software

1. Structure & transmission

A、Structure & transmission

01

Single-axis (Canopy, Sphere)

03

Dual-door

05

Container

02

Cabinet

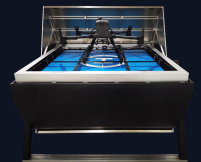
04

Rooftop



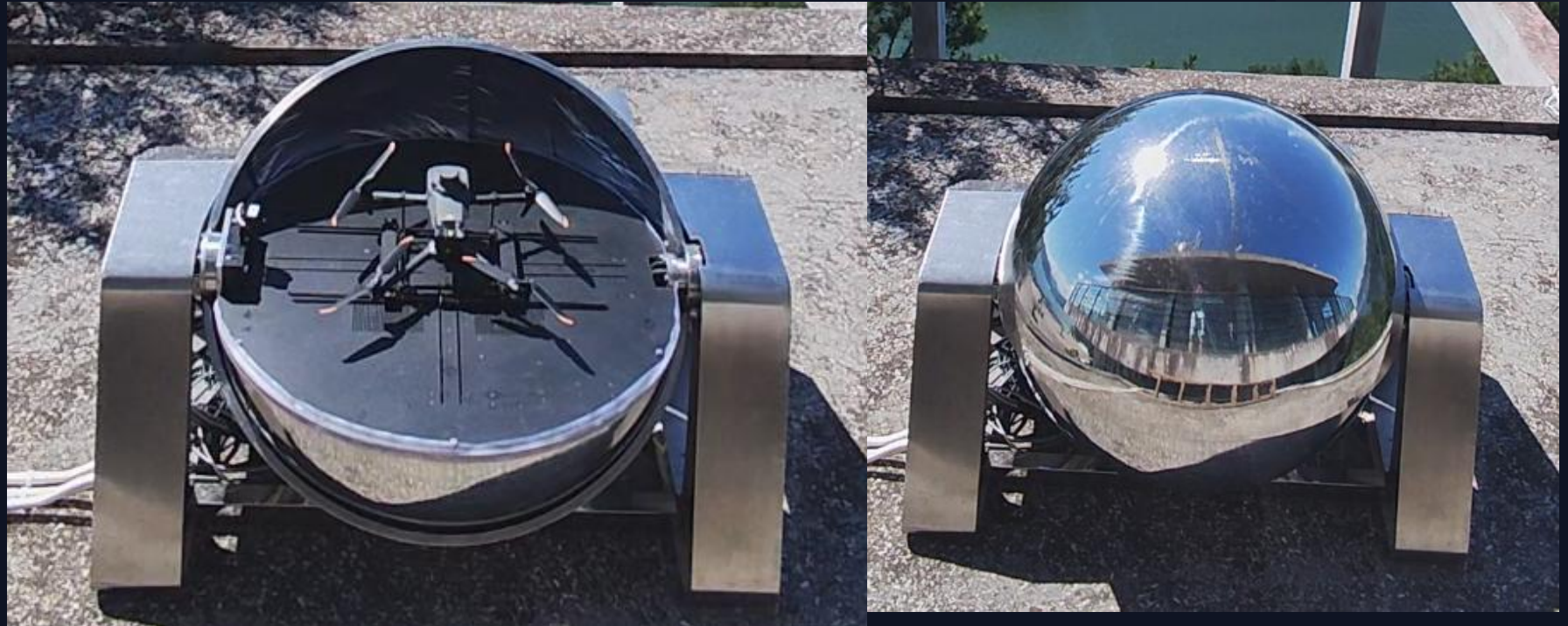
Canopy

- Structural advantages: only one set of transmission, great waterproof performance, suitable for all kinds of extreme climate.
- Size range: 50, 60, 80, 100, 135cm.



Sphere type

- Sphere type
Only suitable for small
size customization



Cabinet

- Cabinet structure

Customized for small sizes only, can be made in multiple layers.

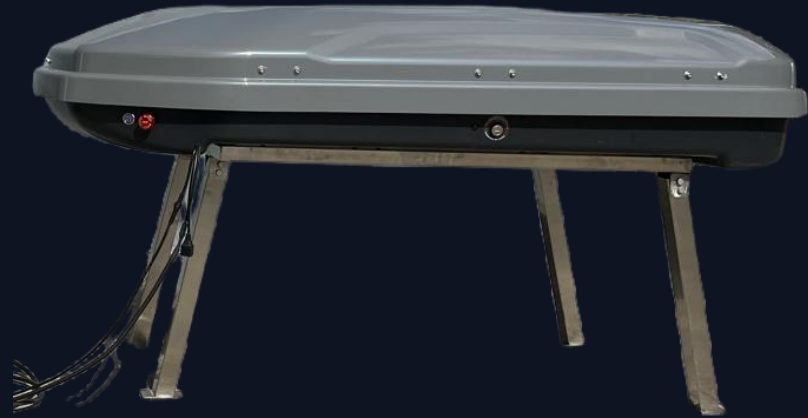


Dual door

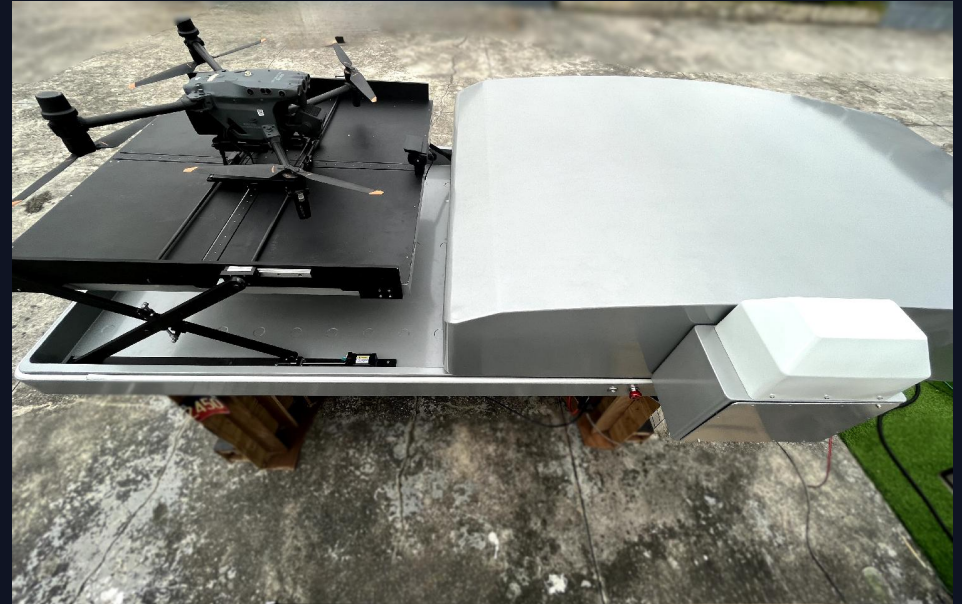
- Open size: 4500*2200*1500mm
- Weight: 350kg
- Mainly adapted to Phoenix Wings Ark 20, Ark 40
- Open protocol: MQTT/MODBUS RTU
- Reserve a variety of external interface



Mobile Lifting Transmission

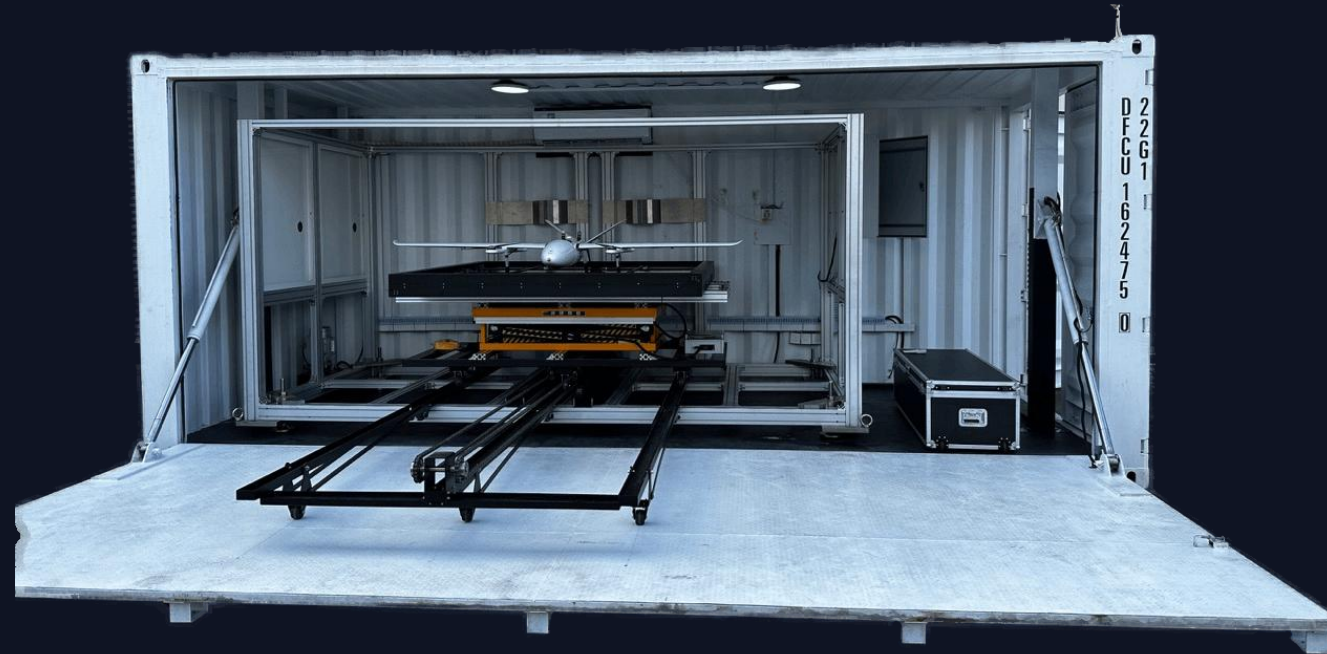


Size range: 30-100cm



Max. compatible with DJI M30

V200 VTOL drone dock



- Open cover size: 6m*4.7m*2.6m
- Close cover size: 6m*2.45m*2.6m
- Weight: 3.3T
- Charging time: about 120 mins (depending on model)
- Open SDK
- Cost efficient
- Easy for batch production
- Convenient for shipping by sea

B、Charge board structure

01

Small size for warehouse
inspection

04

For tethered drone

07

Vehicle-conversion

02

Customizable size

05

Propeller withdraw structure

08

Rotatable structure

03

With stabilization agencies

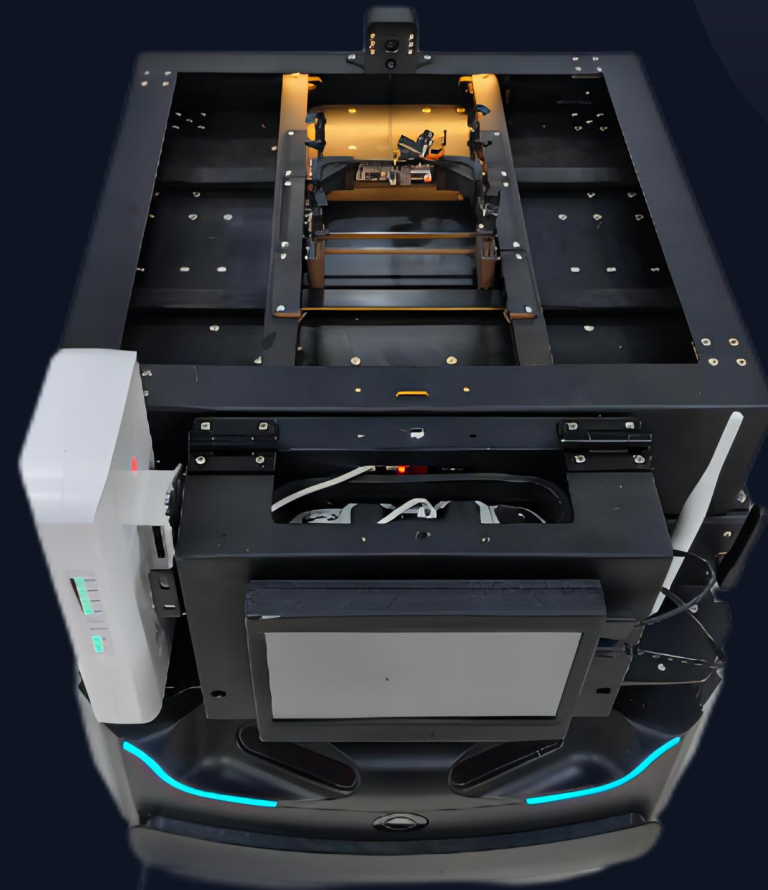
06

Lifting structure

DPAD40

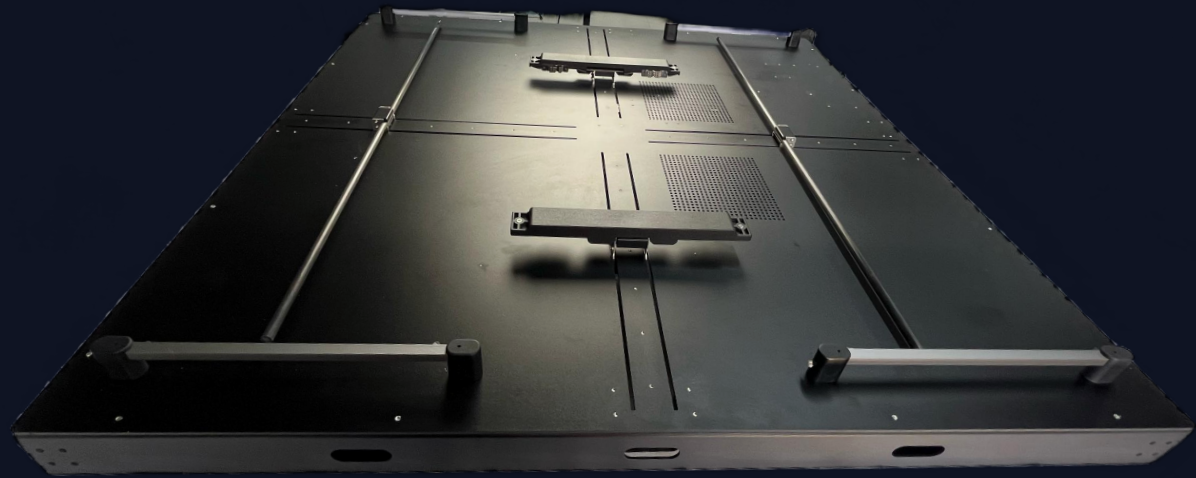
For Warehouse management

- Size: 40*40cm
- For indoor warehouse inspection
- Compatible with Mavic3, Mavic3 enterprise, Mini 3, Air 2s
- Easy to deploy
- Available for opening SDK



Customizable size

- Size: 1000*1000mm; 800*800mm
- Mainly adapted to DJI M30, Mavic 3 enterprise series.
- Open protocol: MQTT/MODBUS RTU
- Reserve a variety of external interfaces



Large charging board

- Size: 1350*1350mm
- Mainly adapted to DJI M350, M30, Codev, HEQ VTOL drone.
- Open protocol: MQTT/MODBUS RTU
- Reserve a variety of external interfaces



For Marine - with stabilizing mechanism



- Size: customizable
- Mainly for mining trucks, ships and other scenes that need stabilization.
- Structure: mechanical simple stabilization, complex six-axis stabilization
- Open protocol: MQTT/MODBUS RTU.
- Reserve a variety of external interfaces
- Support: single module use, can be customized to support a complete dock



For tethered drone

- Size: 1350*1350*70mm; 800*800*70mm
- Can be customized size, adapted to DJI M350, M30, Mavic 3 enterprise series.
- Structure: lifting type
- Open protocol: MQTT/MODBUS RTU
- Reserve a variety of external interfaces

Propeller withdraw structure

- Size: 136*116*89mm (L*W*H)
- Compatible with open source multi-rotor UAV
- Open protocol: MQTT/MODBUS RTU
- Reserve a variety of external interfaces





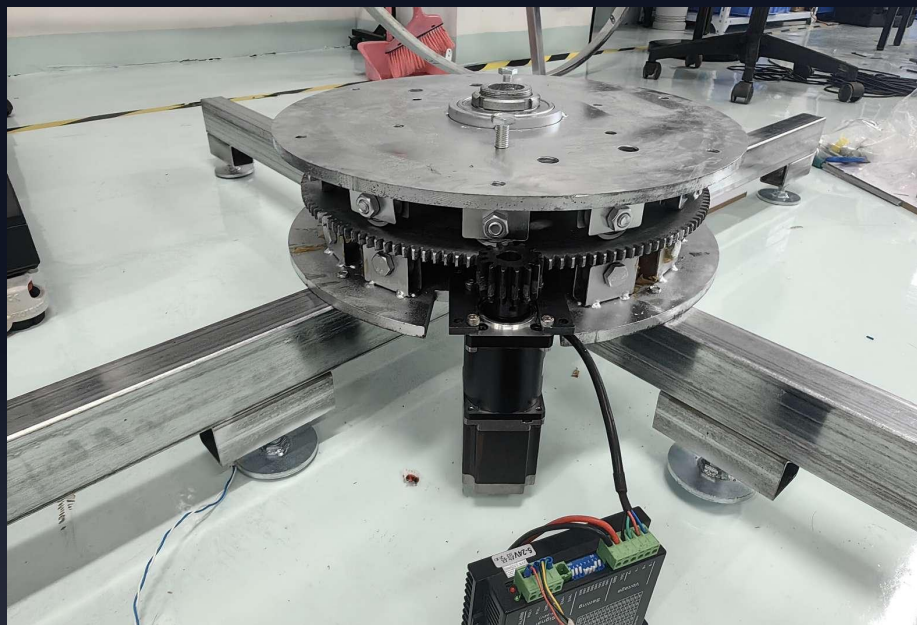
Lifting structure

- Lifting range: 10mm-3m
- Lifiable weight: 10kg-1T
- Structure: Lifting and lowering type
- Open protocol: MQTT/MODBUS RTU
- Reserve a variety of external interfaces
- **Openness: lifting and lowering can be customized, charging board size can be customized**



Vehicle conversion drone dock

- Function: Adaptation of charging board for all kinds of vehicles
- Structure: lifting type, non-lifting type, with stabilizing are available
- Open protocol: MQTT/MODBUS RTU
- Reserve a variety of external interfaces
- Openness: Lifting can be customized, charging board size can be customized.
- Extensibility: complete dock can be adapted according to the requirements of car models.



Rotating structure

- Functions: drone charging board with rotating direction requirements.
- Structure: center rotation, elevated, non-elevated, with stabilization are available
- Open protocol: MQTT/MODBUS RTU
- Reserve a variety of external interfaces
- Openness: customizable size for charging board
- Extensibility: complete docks can be adapted on request.

C、Fire grenade & battery swapping

01

Fire grenade swapping

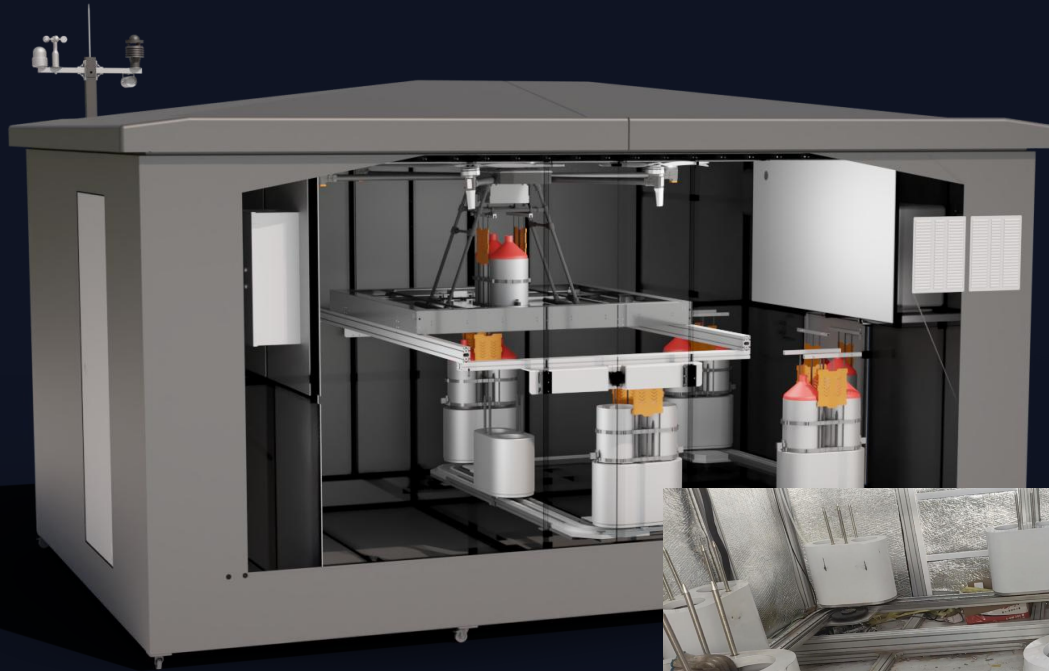
02

Battery swapping

03

Truss robotic arm

1. Fire grenade swapping



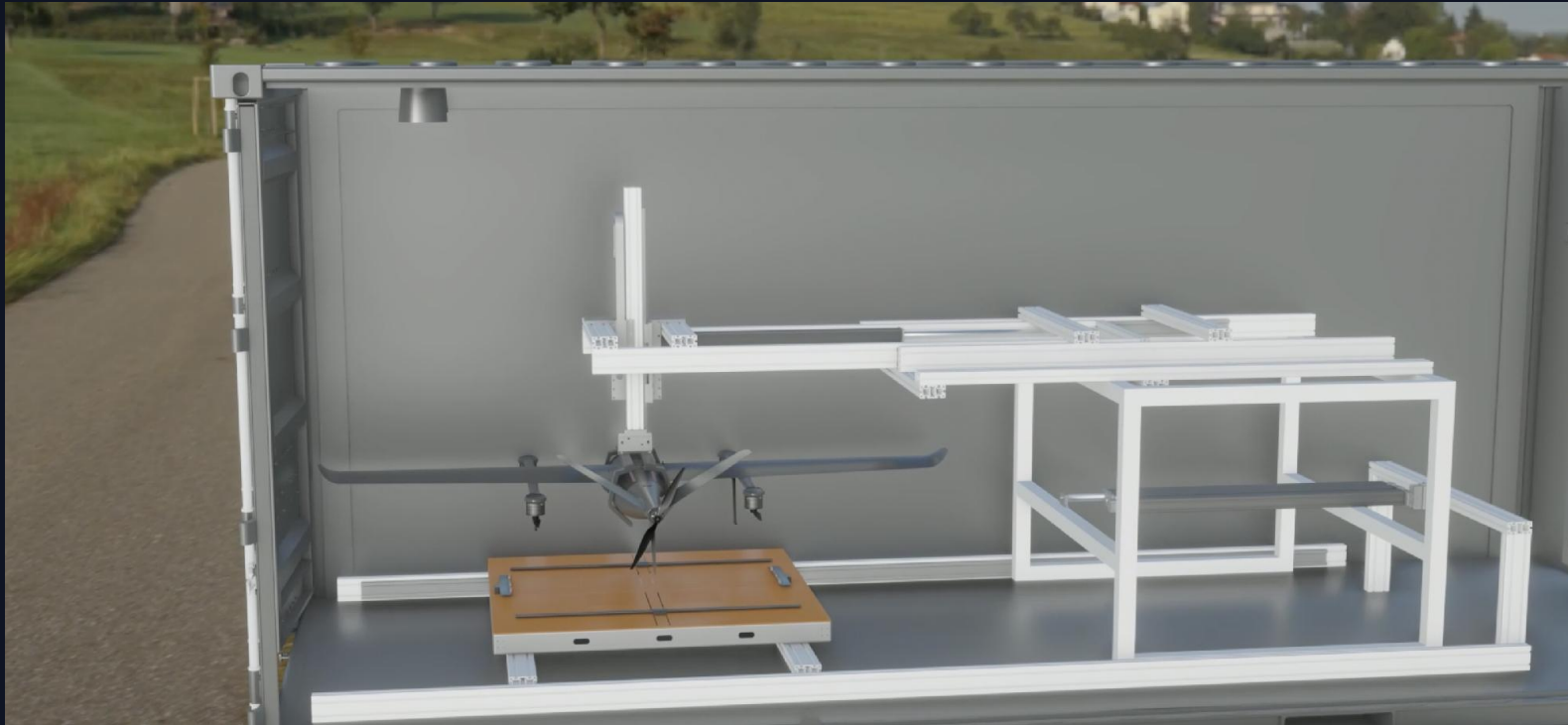
- Automatical fire grenade swapping
- Compatible with any drone docks
- Open size: 10.3*4.5*3.5m
- Close size: 6.3*4.5*3.5m
- Open SDK
- Fire grenade weight: 8kg/5kg



2. Battery swapping



3. T200 truss robotic arm



2. Charging & landing gear

ACK800-Autonomous Charging Kit

M30 | M300 | M350 | Parrot | Autel | Open-source drones

Remote Autonomous Charger

- 4s-16S
- Customized autonomous and safe charging for all types of robots



ACK2000-Autonomous Charging Kit

Remotely autonomous charger



ACK150

Adaptable to 3s, 4s drone charging
(Support DJI Mavic 3 drone
automatic charging)

1. Power supply: DC18-24V
2. Control signal: CAN bus
3. Support 130W charging, switching,
charging voltage and current detection.



DBox vehicle mounted charging box

- Size: 120cm*65cm*28cm (L×W×H)
- Weight: 35kg
- Can charge 4 batteries at the same time
- Store 4 extra batteries + 2 drones
- Real-time reading of battery level
- Battery status can be uploaded to the cloud



Charging landing gear

- DJI MAVIC2 landing gear
- DJI MAVIC3 landing gear
- DJI M300/M350 landing gear
- DJI MINI3 landing gear
- Autel EVO landing gear
- PARROT ANAFI landing gear
- SKYDIO landing gear
- Smart landing gear (data access directly)



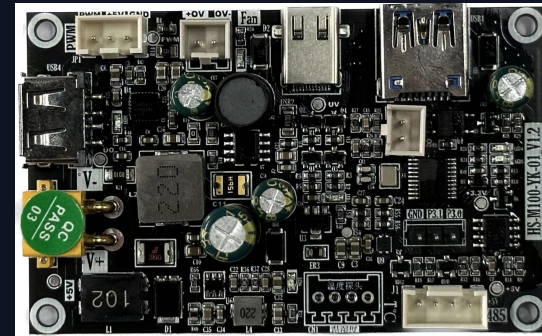
Smart landing gear



Data transmission module

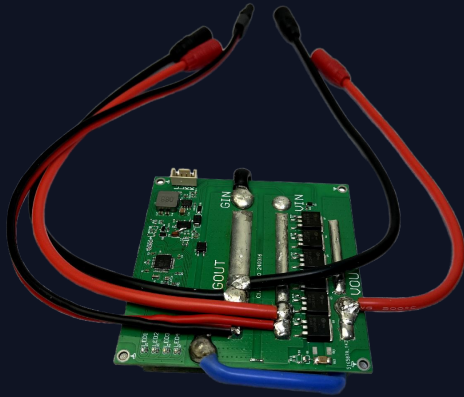


Remote controller base

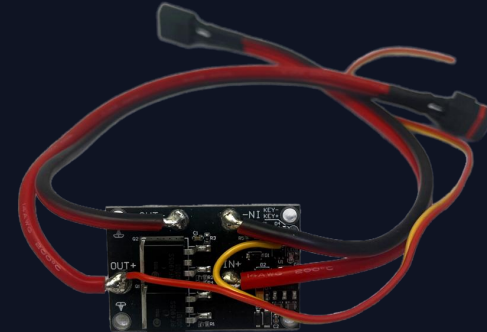


Remote switch board

Wired, Wireless - Applicable Products



High current



Low current

3. Dock controls & sensors

U n i v e r s a l C o n t r o l

01

Universal Control Board

02

Universal Power Supply

03

Automotive Grade Wiring
Harnesses

04

Electric Safety

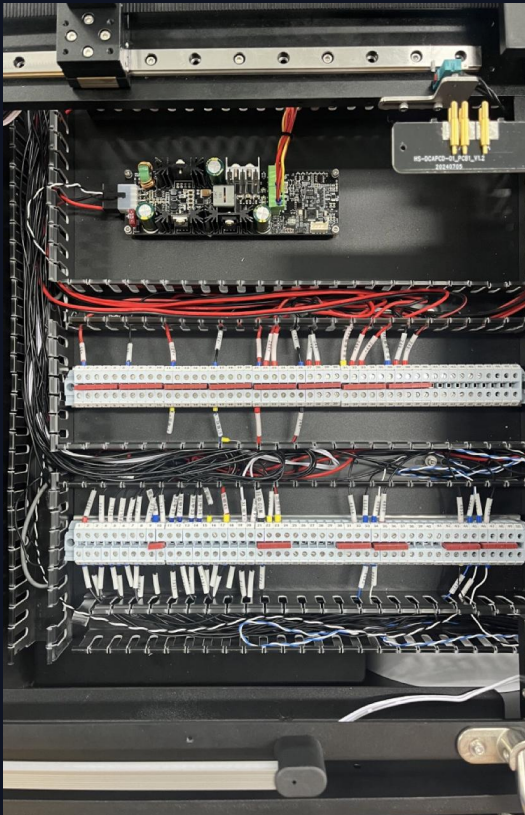
1. Universal Control Board



2. Universal Power Supply



3. Automotive Grade Wiring Harnesses

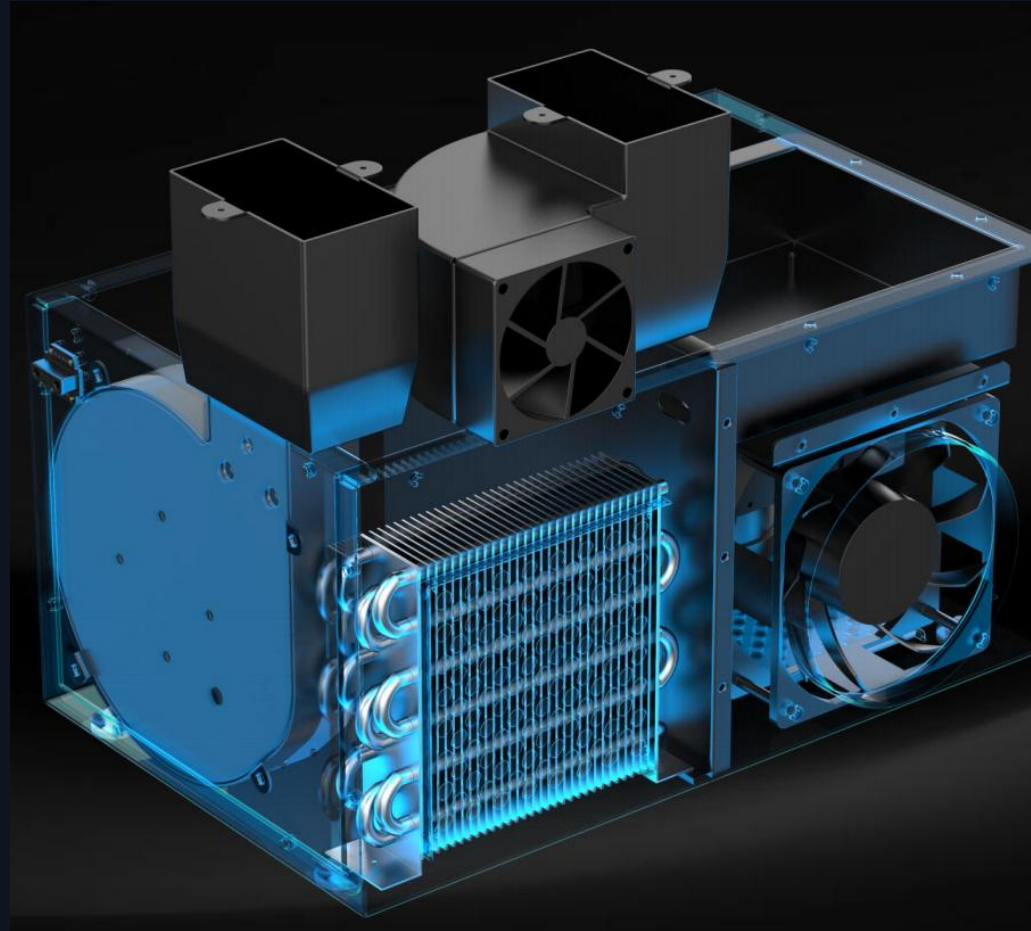


4. Electric Safety

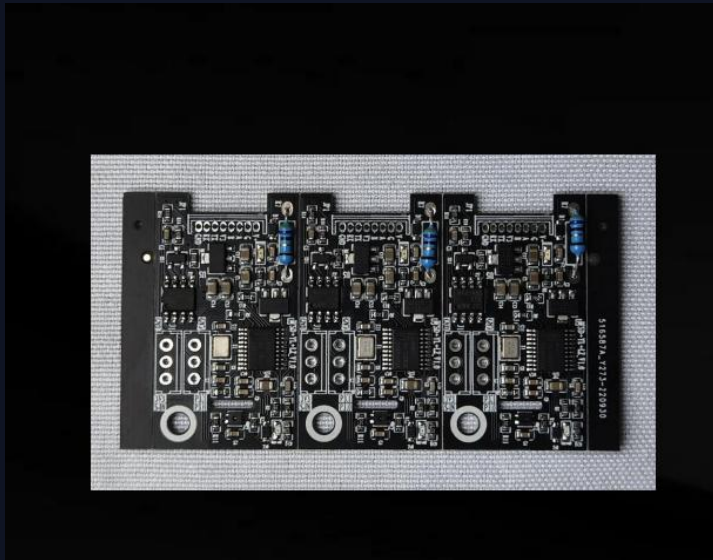
- Lightning Protection, Surge Protection, Air Opening



4. Air conditioner & air duct



6. Mini Rain Gauge



- Dimensions: 46mm(L) * 49mm (W) * 43mm (H)
- Weight: 47g
- Operating Voltage: DC 5-24V
- Operating Temperature: -50~+90°C
- Operating humidity: 0%~100
- Internet access: RS485 standard ModBus RTU protocol

Software control

Software control

01

Pilot APK+HEISHA API

02

Dock API

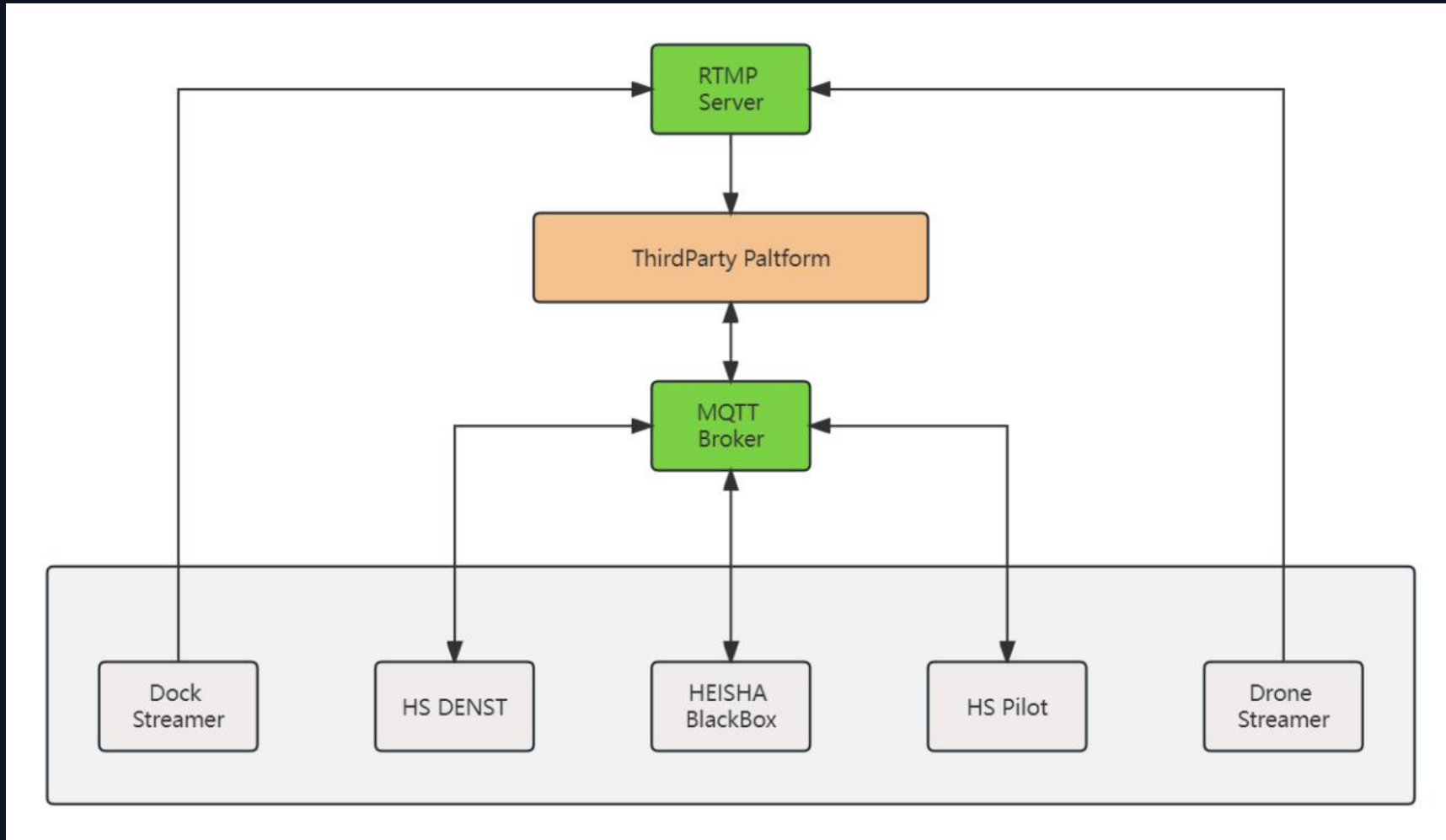
03

UAV check in service

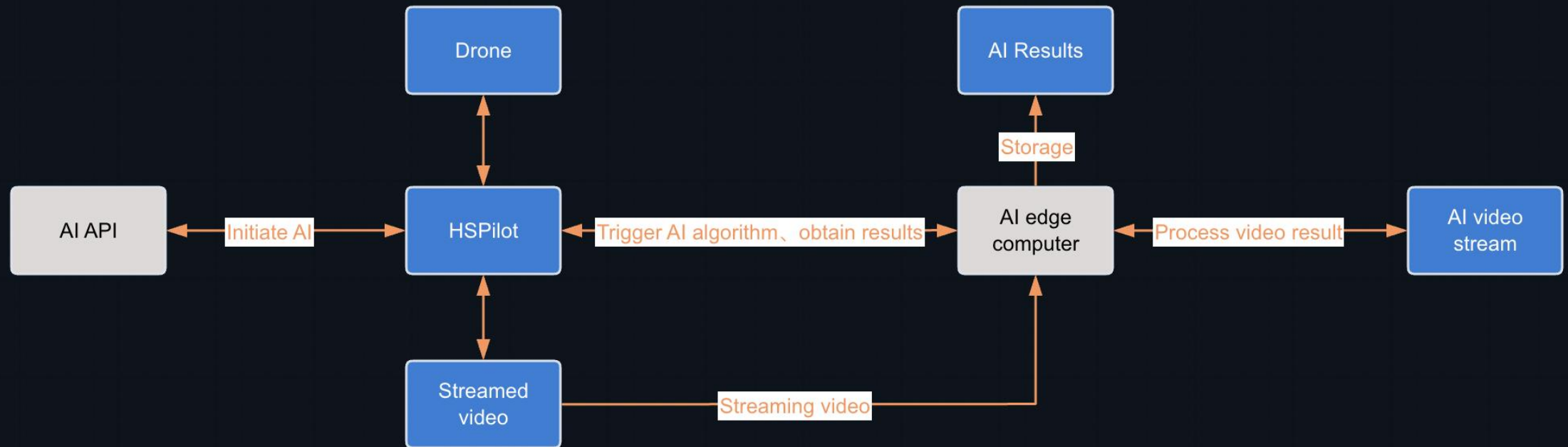
04

Applications

1. Pilot APK+HEISHA API



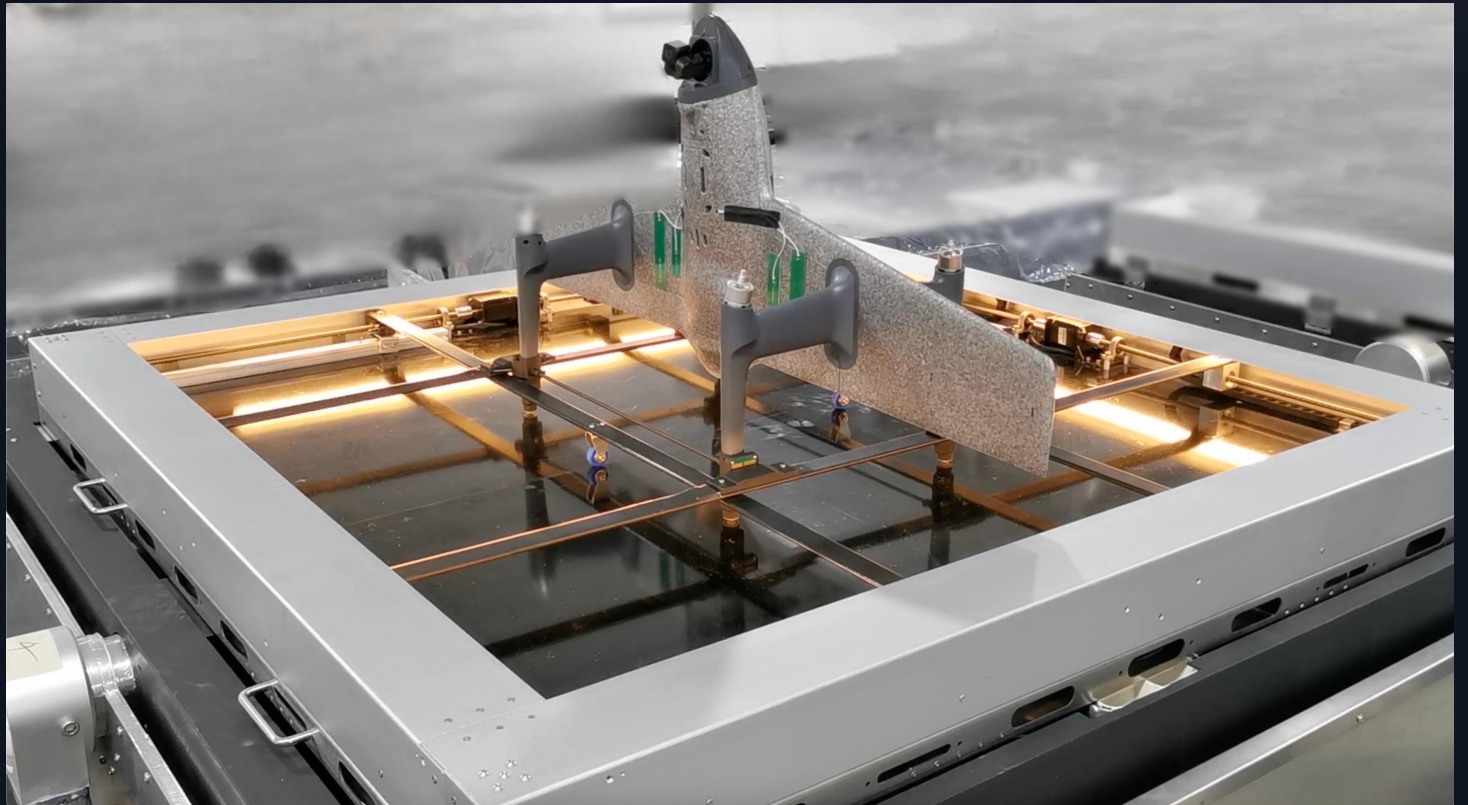
2. Dock API



3. Check-in Service

Software connection

- Open check-in API, support different kinds of drones to dock



4. Flight software

FlytBase

荒川_ドローンポート活用実証実験_2023

Shift Waypoints

0 0 Shift

Missions

Mission Name	Device	Status	ETA	Distance	Waypoints	Finish Action
荒川テスト	Mavic 2 Pro	Pause	01:16	380.20m	12	RTDS
荒川テスト	Mavic 3T	Unavailable	01:34	284.87m	10	RTH/RTSL
荒川本番	Mavic 2 Pro	Unavailable	04:19	1299.16m	17	RTDS
荒川本番	Mavic 3T	Unavailable	08:59	3236.99m	32	RTH/RTSL

Search location

Refresh FPS: 24 Res: 720p Optimization: Default

Min Max

M2P-001

荒川

荒川

岩淵リハ 臨時休業

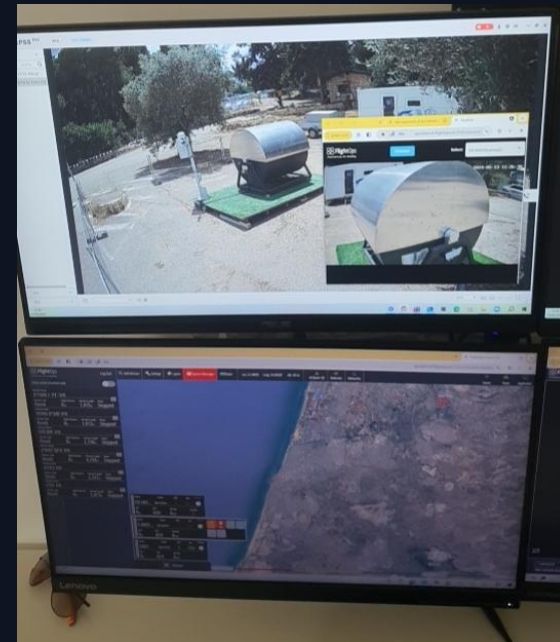
Feed 1

Settings

Flights were conducted according to the pre-defined automatic navigation routes. River conditions were monitored real-time

D80 dock and FlytBase flight software for river environment monitoring in Japan.

FlightOps



D80 dock with Cavok UAV, FlightOps flight software for border patrol missions.

HEISHA

& High Lander



TT Aviation



Docking TT Aviation's vertical take-off and landing drones for wide-area inspections.



Phoenix Wings Ark 40, HEISHA D80 UAV dock, together forming the Resistance Emergency Response Network system in Dapeng.

We build bot mansions

THANKS
